



A valuable benefit for business

Bupa Dental Plan

**Bupa dental insurance.
Better for business**



Healthier smiles. Stronger business

Help your team take better care of their oral health with quick access to a dentist and cashback on their treatment costs. When they're feeling healthier and happier, your business will feel the benefit too.

Our Dental Plan key benefits

For your business:

- can help reduce absence
- can attract and keep top talent
- can improve productivity by minimising disruption

For your people:

- claim cashback on check-ups and treatments
- oral cancer, injury and emergency cover
- worldwide cover
- feel-good rewards

Why Bupa?

Our dental cover goes further to support your team at every stage of their health journey. It's more convenient, more connected care. Making people happier and businesses healthier. Take a look and see what makes our dental cover better for businesses just like yours.



The care your people need

Healthy mouths support healthy, hardworking bodies. But when costs are going up and wait times are increasing, it can mean our health falls down the priority list. We're here to make sure your employees' dental health isn't overlooked.

Many can't afford dental costs

1 in 4 people have delayed dental treatment because of its rising costs.

YouGov, 2023



Many struggle to find care

1 in 4 people were unsuccessful in getting a dental appointment in 2023.

GP patient survey, NHS England, 2023



Dental problems are affecting work

Almost half of employees have called in sick or left work early due to dental pain.

Bupa internal data, 2023



Almost 7 in 10

employees said their motivation at work would increase if dental insurance was offered by their employer.

Bupa Wellbeing Index



It's easy to see the value

Employees often use their dental insurance at least twice per year, and they feel good about it.

Joined up healthcare. It's what we do

We all need dental care, but accessing it isn't always easy. We're doing all we can to change that, because seeing a dentist shouldn't be difficult.

We're the only insurer with our own dental practices – over 360 of them across the UK. That's over 2,500 Bupa dental professionals working hard to get employees like yours smiling again. It means from cover to care, your people are in safe hands.

A photograph of two women sitting at a desk. The woman on the left has long blonde hair and is wearing a white sleeveless top. The woman on the right has a large, dark, curly afro and is wearing an orange short-sleeved button-down shirt. They are both smiling and looking at a laptop screen. A computer mouse is visible on the desk in front of them.

9 in 10

**NHS dental practices
in the UK aren't
accepting new patients**



BBC, BDA, 2022

Big benefits at Bupa practices

We're all about options. So, your people can find their local Bupa dentist, stick with their current one, or see any other dentist they like for their treatment. The choice is theirs.

Using a Bupa dental practice unlocks a range of benefits



Speedy, hassle-free claiming

At most practices, we'll settle their claim at the reception desk with our **Instant Claim** service.



Guaranteed appointments

There's always a space at our practices so dental worries get sorted sooner.



Discounts

Up to 20% off* the cost of their treatment to help them make the most of their benefit allowances.



We're never far away

Over 360 practices across the UK means less time spent travelling to appointments.



Finding a Bupa dentist is easy

Finder is our time-saving search tool. Employees can use it to find their nearest dentist and book their next check-up online.

*You must tell the dentist you have Bupa dental insurance and provide your membership number prior to your appointment to benefit from this offer. 10% or 20% discounts are available depending on the practice and the dentist you are seeing. To find the selected Bupa owned and approved network dental practices where this offer is available, see finder.bupa.co.uk and search the Bupa Dental Insurance Network. Discount excludes laboratory fees and specialist treatment and cannot be used against NHS and Bupa Dental Essentials services. Discount cannot be used in conjunction with any other discount.

On-demand dental care

At work, at home or on the move, our dental cover fits around busy schedules.

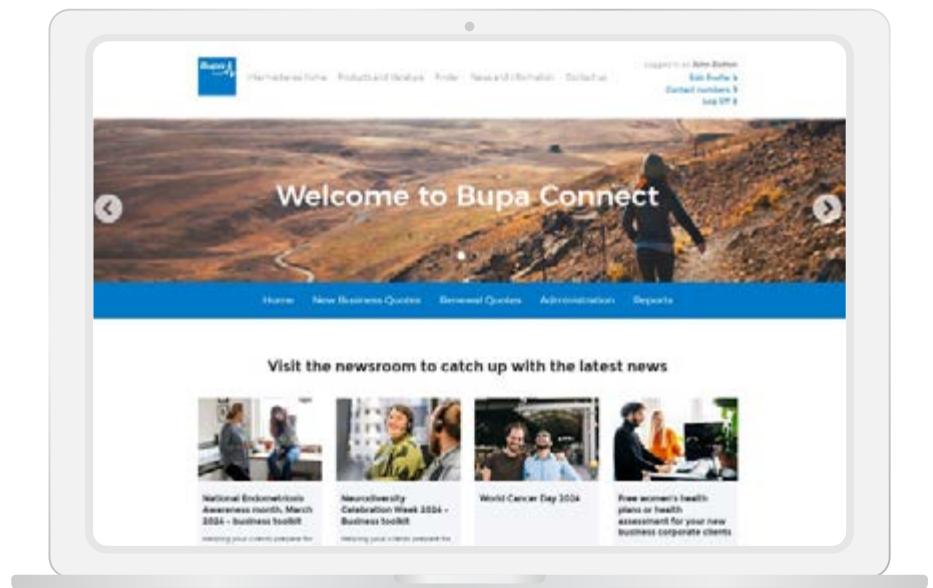
For you

Bupa Connect

Your online portal that makes managing your company dental cover a breeze.

Dedicated account manager

You'll get your own account manager who'll be there to support you.



For employees

My Bupa

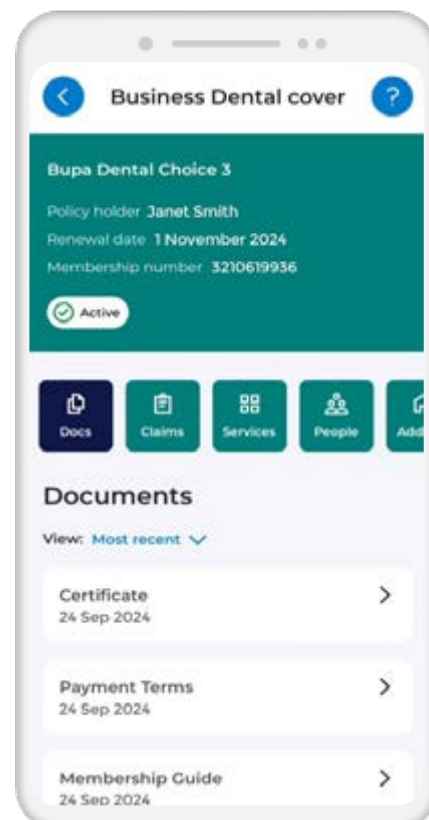
Either in-app or online, it's their dental cover in their hands.

Oral HealthLine

From guaranteed appointments to emergencies, there's fast phone advice with our dedicated support line.

Worldwide cover[^]

It's good to know that wherever they go, they can claim for most treatments, up to their benefit allowance.



[^]Worldwide cover excludes orthodontic treatment, oral cancer treatment, dental injury treatment for failed surgical implants and cash benefit for a hospital stay.

You're always innovating. So are we

We're always looking for ways to make your dental cover even better. That way, you can be sure it's working as hard as it can for your people and business.

New for Dental Plan

+ Increasing benefit allowances

More for your money. We've increased the benefit allowance for fillings, root canals, fluoride treatment and extractions.

+ Oral HealthLine

New name, same quality service. Giving employees fast phone advice on all things dental.

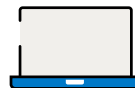
Because prevention is always better than cure

Promoting good oral health amongst your team could mean you see less absence for unexpected dental problems and more focus towards the growth of your business. That's why we're here to support them with their dental health every day, not just for some day in the future.



Prevention

Regular dental check-ups can mean more serious issues are caught early, reducing the need for time off work.



Education

Online hubs, emails and other tools designed to get your people thinking proactively about their oral health.



Expert care

Our specialist dentists in our network will take care of anxious patients.



Rewards

Hand-picked health and leisure discounts that help employees to feel great.

From the routine to the more complex



Cancer, covered

We pay oral cancer claims in full. So, it's good to know should the worse happen, we've got oral cancer covered.



Specialist treatment

Orthodontics, surgery, gum treatment and more. Big or small, we're here for it all.

Bupa Dental Plan Table of Cover

A range of cover options to help suit your needs

Here are details of the maximum amount your employees and anyone covered on the policy can claim up to in each policy year. These benefit allowances are per person meaning everyone covered on the policy can claim up to the amounts shown.

Where we say for each course of treatment, we mean all visits needed to complete this treatment. This includes preparation, supply and fit for each tooth restoration and any associated laboratory costs needed for this.

Full details of what is and isn't covered can be found in Section 3 of the membership guide.

Worldwide preventative dental treatment

	Level 1	Level 2	Level 3	Level 4	Level 5
Dental examinations					
Routine examination	up to £30	up to £40	up to £70	up to £80	up to £110
	for each visit, unlimited visits in each policy year				
New patient examination or specialist consultation	up to £50	up to £60	up to £70	up to £80	up to £110
	one visit in each policy year				
Dental X-rays					
Small X-ray including bitewing or intraoral	up to £6	up to £8	up to £80	up to £90	up to £100
	Level 1-2: For each X-ray, unlimited X-rays in each policy year		Level 3-5: For each policy year		
Other dental X-rays or scans	up to £15	up to £25	up to £30	up to £38	up to £45
	for each X-ray or scan, unlimited X-rays or scans in each policy year				
Scale and polish					
Scale and polish (by your dentist or hygienist)	up to £30	up to £45	up to £90	up to £100	up to £130
	for each visit, unlimited visits in each policy year				
Periodontal treatment					
Periodontal treatment	up to £90	up to £95	up to £105	up to £120	up to £130
	for each visit, unlimited visits in each policy year				

Worldwide restorative dental treatment

	Level 1	Level 2	Level 3	Level 4	Level 5
Fillings and composite bonding	up to £60	up to £85	up to £95	up to £120	up to £165
	for each tooth				
Fissure sealant	up to £20	up to £25	up to £30	up to £35	up to £40
	for each tooth				
Topical fluoride treatment	up to £35	up to £40	up to £45	up to £50	up to £55
	for each tooth				
Root canal treatment	up to £115	up to £160	up to £205	up to £305	up to £355
	for each tooth, for each course of treatment				

Worldwide restorative dental treatment (continued)

	Level 1	Level 2	Level 3	Level 4	Level 5
Extraction and surgical treatment					
Surgical implant	up to £425	up to £600	up to £850	up to £1,000	up to £1,300
	for each implant				
Extractions	up to £50	up to £55	up to £80	up to £100	up to £140
	for each tooth				
Restorative dental treatment					
Inlay/onlay	up to £125	up to £175	up to £260	up to £350	up to £375
	for each tooth, for each course of treatment				
Porcelain Veneer	up to £215	up to £240	up to £270	up to £390	up to £425
	for each tooth, for each course of treatment				
Crown	up to £210	up to £250	up to £325	up to £480	up to £500
	for each tooth, for each course of treatment				
Bridge	up to £425	up to £600	up to £750	up to £900	up to £1,100
	for each course of treatment				
Repair of bridge or crown	up to £25	up to £30	up to £35	up to £55	up to £75
	for each course of treatment				
Post for crown (cast post and core, or prefabricated post and core)	up to £35	up to £56	up to £90	up to £110	up to £125
	for each course of treatment				
Denture					
Upper or lower denture (partial or full)	up to £360	up to £450	up to £500	up to £650	up to £800
	for each denture, for each course of treatment				
Repair or reline of a denture (partial or full)	up to £30	up to £35	up to £40	up to £50	up to £60
	for each repair				
Other treatment					
Mouthguard (partial or full)	up to £82	up to £150	up to £175	up to £200	up to £225
	one mouthguard for each policy year				
Any other clinically necessary restorative dental treatment	up to £65	up to £75	up to £85	up to £115	up to £125
	for each policy year				

Other dental benefits

	Level 1	Level 2	Level 3	Level 4	Level 5
Orthodontic treatment UK only	up to £425	up to £500	up to £580	up to £660	up to £750
	for each policy year				
Intravenous and oral sedation (Worldwide cover)	up to £65	up to £70	up to £75	up to £80	up to £100
	for each policy year				
Emergency dental treatment (Worldwide cover)	up to £800	up to £800	up to £800	up to £800	up to £800
	for each policy year				
Dental injury treatment (Worldwide cover)	up to £5,000	up to £5,000	up to £5,000	up to £5,000	up to £5,000
	for each policy year				
Oral cancer treatment UK only	paid in full to diagnose and treat oral cancer when using a fee-assured consultant in a partnership facility				
Cash benefit for hospital stay UK only	up to £100	up to £100	up to £100	up to £100	up to £100
	for each night you stay in hospital up to £1,000 in each policy year				

Rewards by Bupa is not regulated by the Financial Conduct Authority or the Prudential Regulation Authority.

Rewards by Bupa is promoted by Bupa Investments Limited, 1 Angel Court, London EC2R 7HJ. Terms and conditions can be found at bupa.co.uk/rewards

Bupa dental insurance is provided by Bupa Insurance Limited. Registered in England and Wales with registration number 3956433. Bupa Insurance Limited is authorised by the Prudential Regulation Authority and regulated by the Financial Conduct Authority and the Prudential Regulation Authority.

Arranged and administered by Bupa Insurance Services Limited, which is authorised and regulated by the Financial Conduct Authority. Registered in England and Wales with registration number 3829851. Registered office: 1 Angel Court, London EC2R 7HJ

© Bupa 2024

bupa.co.uk/dental