

Bupa dental insurance.
Better for business



**A valuable benefit
for business.**
Bupa Dental Plan.

Why choose Bupa dental insurance?

It's simple. As your health and wellbeing partner, our aim is to help you build a healthier, happier and more productive workforce, so you're ready to face the challenges of tomorrow.

18% of people said their dental health was one of their biggest health and wellbeing concerns. Dental worries are as high as cancer (also at 18%) and ahead of heart health worries (15%).* So, we're committed to providing you with a benefit your people will really use and value.

You'll be helping your employees claim cash-back on their dental treatment, private or NHS. We'll cover preventative and restorative treatment, as well as emergency, injury, orthodontic and oral cancer treatment. This could help you attract and keep the best talent in a tough job market.



18%
of people said their dental health was one of their biggest health and wellbeing concerns.*

*According to the new Bupa Wellbeing Index, a landmark survey conducted amongst 8,000 UK adults that has uncovered the state of the nation's health and wellbeing.



A benefit that's in demand

Dental care is an essential part of our health and wellbeing. However, many are finding it increasingly hard to access.

Rising costs and an exponential increase in NHS wait times means dental problems are being left untreated. It's thought that almost 40 million NHS dental appointments have been missed, since the pandemic began.

With our dental cover, you'll be filling the need for accessible dental care. You'll be helping your employees claim for their dental treatments up to benefit limits whilst making sure you're attracting and keeping the best talent in an increasingly competitive job market.

9 in 10

A 2022 investigation from BBC News and the British Dental Association has found 9 in 10 NHS dental practices across the UK are not accepting new adult patients for treatment under the health service.¹

¹ [bbc.co.uk/news/health](https://www.bbc.co.uk/news/health), 2022



42% struggle to pay dental costs

Over a third of people either struggle to pay for or avoid dental treatment entirely because they can't afford the cost.



Oral cancer is left untreated

Incidents of oral cancer have increased by almost 50% in the last decade, whilst referrals fell by 65% in 2020.²

²Oral Health Foundation.



Linking oral and general health

Research shows that if left untreated, gum disease can lead to an increased risk of heart disease, a stroke or even Alzheimer's disease.³

³British Heart Foundation.



By making it quicker, easier and less expensive for your employees to get to the dentist, Bupa dental insurance can help answer all these concerns and more.

Dental care that's easier to access and manage



Rising costs and delays are making it harder for people to access the dental care they need. With Bupa dental insurance, your employees can see any dentist they like, but a Bupa Dental Care practice is never far away – we have over 360 of them across the UK. What's more, in our Dental Insurance Network, dental insurance customers can receive benefits such as member discounts and smoother claiming journeys with Instant Claim.

Bupa Dental Insurance Network

Flexible support

Instant Claim



At selected practices in our Dental Insurance Network, employees can settle their claim instantly at the desk, paid up to benefit limits.

Bupa Dental Care support line



We guarantee an appointment at one of our practices, or we can arrange a phone or video consultation to give fast advice.

Up to 20% discount**



When employees use a Bupa Dental Care practice in our network, they can receive up to 20% off the cost of general treatments.

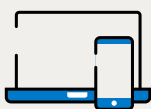
Bupa Finder



Finder, our unique, online tool, helps you to easily locate your nearest Bupa Dental Care practice and see what benefits are offered there.

Easy-to-manage cover

Bupa Touch



Bupa Touch is our members' digital account. It allows employees to view their policy, make claims, see their history and more at the touch of a button.

Bupa Connect



Bupa Connect, our award-winning online portal, makes managing your employees' cover easy with quick and easy tools to let you work efficiently and independently.

*Worldwide cover excludes orthodontic treatment, oral cancer treatment and cash benefit for a hospital stay.

**You must inform the dentist you have Bupa dental insurance and provide your membership number prior to your appointment to benefit from this offer. 10% or 20% discounts are available depending on the practice and the dentist you are seeing. To find the selected Bupa owned and approved centres where this offer is available go to finder.bupa.co.uk and search the Bupa Dental Insurance Network. Discount excludes laboratory fees and specialist treatment and cannot be used against NHS and Bupa Dental Essentials services. Discount cannot be used in conjunction with any other discount.

Keeping employees at their best with leading expertise



Clinical expertise is what we do best. Our clinical specialists are experts in their field, helping to drive the innovation of our cover forward. Through customer feedback, we've made some exciting changes to help keep your employees at their best.

New changes from September 2022



Improved oral cancer cover

We're the only leading insurer that gives unlimited oral cancer treatment[^] when your employees use a fee-assured consultant in a partnership facility and now, they won't have to wait for treatment either. We'll also cover diagnosis and any restorative treatment needed as a result of their oral cancer treatment.[†]



Enhanced restorative benefits

We've separated our fillings and root canal benefit. Customers told us how different these procedures were. This means your employees can now claim more cash back towards a filling and a root canal. We now also cover all clinically necessary restorative dental treatment[‡] up to benefit limits.



Cover for hospital treatment

Previously excluded from our policy, we'll now pay for employees' hospital dental treatment up to benefit limits. Employees can also claim for overnight stays at £100 per night, up to £1000 per policy year.

Bupa Dental Care expertise

Our vast network includes over 360 Bupa-owned and approved practices across the UK. We have a team of clinical specialists informing how our Bupa Dental Care practices are managed so if your employees choose us, they can be reassured they'll be receiving high quality dental care, so they can reach their full potential at work.

Quality care

At Bupa Dental Care practices, employees will receive high quality oral health care. Our practices regularly monitor and train their clinicians to make sure they meet CQC accreditation.

Specialist oral health treatment

Bupa Dental Care doesn't just offer routine dentistry. At certain practices, employees can access quality care for specialist treatments such as orthodontics, root fillings, gum treatment, oral surgery and more.

[^]As of May 2023, this analysis is based on an internally conducted review of the business dental insurance market, using publicly available information from the major insurers in the UK. This refers to standard oral cancer cover when it is included in the selected dental insurance product. We acknowledge that business schemes can have bespoke benefits. Click [here](#) to see how we compare.

[†]We do not cover oral cancer that was diagnosed or for which your employees had symptoms or investigations before their cover start date. However, if you are transferring your dental insurance from another provider, we will provide continuous cover providing they had dental insurance via the previous scheme.

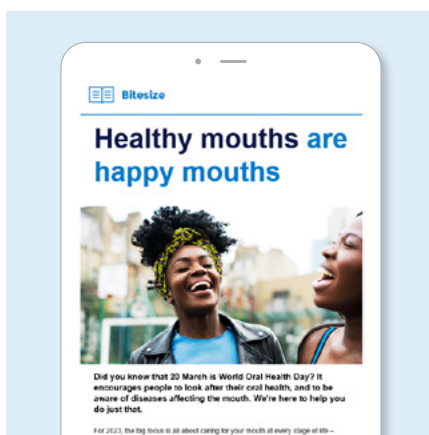
[‡]Except treatment for pre-existing gaps.

Helping you build a healthier, happier organisation

We take care of your employees so they can focus on doing what they do best – driving your business forward. Through education, wellbeing management and preventative programmes, your people can be supported in feeling more in control of their oral health which makes for a more productive workforce.

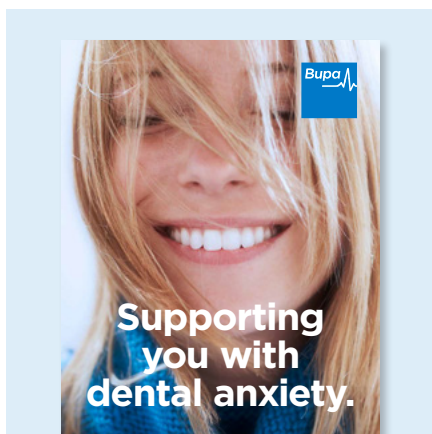
Health and wellbeing support

Practical resources designed for businesses including mental health and workplace wellbeing hubs. Our dental care team have a wealth of resources to support your employees too.



Health insights

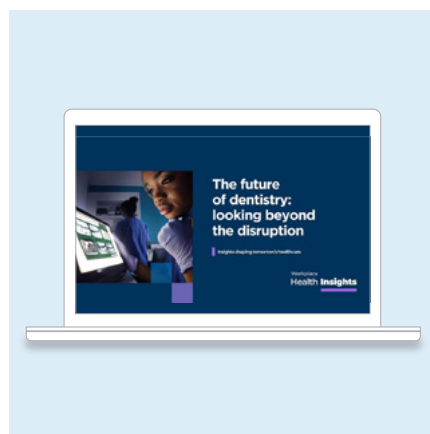
We'll bring you the latest in healthcare trends. From interviews with experts to specialist insights from Bupa, designed to keep your business one step ahead.



Everyday Rewards

Employees can take advantage of a specially curated range of rewards and offers to help boost wellbeing from sportswear and flower delivery to yoga sessions.

Note: Everyday Rewards are subject to change.



Anxious patient support

We have specialised dentists within the Bupa Dental Care network who take care of anxious patients to support them in keeping on top of their oral health.



Local oral health engagement

Exclusive access to local clinicians at our Bupa Dental Care practices who can present to teams on the importance of oral health. They can also organise engagement packages for your teams to visit their practice, such as open days.

Bupa Dental Plan table of cover

A range of cover options to help suit your needs.

The tables show the maximum amount of benefits your employees can claim up to per person per policy.

Refer to Section 3 'Policy Terms' in the membership guide for full details of what's covered, what's not covered and any limitations on cover by treatment type.

Worldwide preventative and restorative benefits

	Level 1	Level 2	Level 3	Level 4	Level 5
Worldwide preventative dental treatment					
Routine examination	£60 up to £30 per visit	£80 up to £40 per visit	£120 up to £60 per visit	£140 up to £70 per visit	£200 up to £100 per visit
	maximum of two visits per policy year				
Scale and polish (by your dentist or hygienist)	£80 up to £40 per visit	£100 up to £50 per visit	£160 up to £80 per visit	£180 up to £90 per visit	£250 up to £125 per visit
	maximum of two visits per policy year				
Virtual routine examination	£20 per policy year				
Dental X-rays and scans	£40	£50	£80	£90	£100
	per policy year				
Worldwide restorative dental treatment					
Fillings, fissure sealant, and topical fluoride	£150	£250	£300	£350	£375
	per policy year				
Extractions	£100	£150	£200	£200	£250
	per policy year				
Major restorative dental treatment	We contribute 80% towards the cost of your major restorative dental treatment up to				
	£275	£450	£700	£2,000	£3,000
	per policy year				

Other dental benefits

	Level 1	Level 2	Level 3	Level 4	Level 5
Orthodontic treatment UK only	£300	£400	£500	£600	£700
	per policy year				
Emergency dental treatment Worldwide cover	£1,000 per policy year consisting of four emergencies, up to £250 each				
Dental injury treatment Worldwide cover	£5,000 per policy year				
Oral cancer treatment UK only	paid in full to diagnose and to treat oral cancer when using a fee-assured consultant in a partnership facility				
Cash benefit for hospital stay UK only	£100 for each night you stay in hospital, up to £1,000 per policy year				

Rewards by Bupa is not regulated by the Financial Conduct Authority or the Prudential Regulation Authority.

Rewards by Bupa is promoted by Bupa Investments Limited, 1 Angel Court, London EC2R 7HJ. Terms and conditions can be found at bupa.co.uk/rewards

Bupa Investments Limited will use your information for the purposes of the administration of Rewards by Bupa. For details of how your information will be processed by Bupa, please visit: bupa.co.uk/privacy.

Bupa dental insurance is provided by Bupa Insurance Limited. Registered in England and Wales with registration number 3956433. Bupa Insurance limited is authorised by the Prudential Regulation Authority and regulated by the Financial Conduct Authority.

Arranged and administered by Bupa Insurance Services Limited, which is authorised and regulated by the Financial Conduct Authority. Registered in England and Wales with registration number 3829851. Registered office: 1 Angel Court, London, EC2R 7HJ.

© Bupa 2023